

CX PULSE

Sustainable Resilience



info@careerxperts.com



LINKEDIN



What 2026 Means for Hiring and Talent Expectations

As 2026 unfolds, hiring in India's startup ecosystem is tightening around substance, with founders looking beyond titles and role changes to assess decision-making, continuity, and credible proof of work under constraint, where real value is defined by **what gets built, sustained, and responsibly owned** over time.

The Rise of Agentic AI & Multi-Agent Systems

The biggest shift this year is the move from chatbots to autonomous agents. Instead of a "Copilot" waiting for your prompt, agents can now **plan, use tools, and complete multi-step goals** independently.

Companies are deploying Multi-Agent Systems (MAS) where specialized agents (e.g., a "Researcher Agent," a "Coder Agent," and a "QA Agent") collaborate to launch entire products or campaigns with minimal human oversight.

BGV Emerges as a Key Pillar of Reliable Hiring

CX Research shows hiring errors often arise when background verification is treated as a formality. Delayed or diluted BGV leads to post-joining misalignment.

A strong, compliant BGV builds credibility and confidence. CX's early-stage verification strengthens hiring decisions and reduces late-stage fallout.



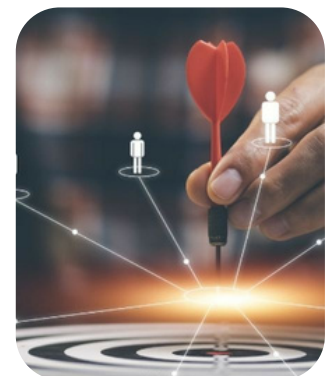
The World Needs Software Craftsmanship

Software teams are rediscovering the value of craftsmanship—disciplines that put quality, intent, and long-term value ahead of quick wins. Practices such as Test-Driven Development (TDD), Pair Programming, and thoughtful Custom Development are no longer niche preferences; they are becoming markers of serious product engineering.

As the market matures, craftsmanship is no longer a "nice to have." It is becoming a competitive advantage. At CareerXperts, the focus is on building product engineering teams grounded in rigor, collaboration, and accountability. Designed for serious product engineering teams. RPO@CX ↗

Why Aren't the Right People Joining Your Startup?

The right people look for purpose, intent, and coherence before committing their time and talent. **Talent branding** helps communicate how work gets done, how decisions are made, and what building truly means. CX supports founders in shaping this narrative, creating confidence and alignment from the very first touchpoint.



A Wake-Up Call for Startups: Be Compliant!



The new labour codes have led top services firms to collectively provision over **₹4,000 crore**. Not due to missteps, but scale.

For **Startups**, the lesson is clear: minor compliance changes compound. Early alignment keeps growth predictable, controlled, and investor-ready.

Cheers to the Years!



Celebrating 13 Years of Rukmini's Journey

For thirteen years, her dedication, ownership, and warmth have shaped our culture - strengthening collaboration, uplifting people, and bringing heart to the work we do.



Rekha: 18 Years of Steadfast Commitment

For nearly two decades, she has been a pillar of CX, earning trust through consistency, sound judgment, and a way of working that clients genuinely value and respect.



Marking 7 Years with Amit

For seven years, Amit has been a dependable force at CX - building trust through reliability, balance, and thoughtful contribution. He brings a steady presence to his work that teams value and rely on, day after day.



Our Newsletters have earned the trust of a million readers

A million curious minds choosing to slow down, think deeper, and engage with ideas around work, leadership, careers, startups, and long-term impact.

Through **Deep Career Conversations**, **Deep Startup Insights**, **Talent for Nationhood**, **Deep Leadership Convictions**, and **Deep Startup Hiring**, we explore the everyday decisions that quietly shape meaningful outcomes.

If you're new here, welcome!
If you've been with us, thank you. This journey is built on curiosity, reflection, and real conversations. Take a moment to explore our newsletters and [join us](#).

Trusted by Builders of Scale

In 2026, we work alongside industry builders who don't compromise on execution. We partner with industry leaders such as **Turner, Tata Steel, Harsco, ACWA Power, VECV, Uniworld Logistics, Danieli Corus, Khatib & Alami**, and **Glance**, among others. Across infrastructure, engineering, clean energy, AI, and design-led ventures, these clients trust us when the stakes are high.

Our mandate is clear: support critical roles, strengthen teams under pressure, and enable organisations to move forward with confidence.

